

DEVELOPING AN AI MODEL FOR DREAM INTERPRETATION BASED ON SUBCONSCIOUS ANALYSIS

Aqdas saleemi¹, Kanza Zahra², Afrasiyab Ali³, Khowla Khaliq⁴, Khalid Hamid⁵, Sheryar ahmed⁶, Hafiz Abdul Basit Muhammad⁷

¹Department of Physics, University of Lahore, Lahore, 54000, Pakistan

²Department of Computer Science, Berkeley City College, USA

³Department of Computer Science, Chicago College, USA

⁴Department of Information Technology, Superior University Lahore, Lahore, 54000, Pakistan

⁵Department of Computer Science and IT, Superior University Lahore, Lahore, 54000, Pakistan

⁶Department of Science and Technology, University of Education Township Lahore, Lahore, 54000, Pakistan

⁷Department of Computer Science and IT, Superior University Lahore, Lahore, 54000, Pakistan

¹aqdassaleemi641@gmail.com, ²30083051@cc.peralta.edu, kanzazahra.624@gmail.com, ³mi44199@mail.harpercollege.edu & afrasiyabali2003@gmail.com ⁴khowla.khaliq07@gmail.com, ⁵khalid6140@gmail.com, ⁶royalsheryar505@gmail.com, ⁷basitbsse786@gmail.com

DOI: <https://doi.org/10.5281/zenodo.18030667>

Keywords**Article History**

Received: 11 October 2025

Accepted: 21 November 2025

Published: 17 December 2025

Copyright @Author

Corresponding Author: *

Khalid Hamid

Abstract

Dreams have long intrigued people and often serve as a window into the subconscious. They reflect our thoughts, feelings, and daily experiences, and give us insight into hidden psychological processes. The analysis outlines the significant role of constructing a cognitive model that is meant to make sense of dreams by determining thoughts and patterns that lie under the dreams. This model is based on the principles of psychology and machine learning, in which it tries to classify the content of dreams and recognize emotional content, including happiness, fear, anxiety, and sadness. The final aim is to develop a device that would allow one to get inside the human soul and give users an idea of their dreams. The mentioned approach is expected to assist in improving mental health, boosting self-understanding, and fostering emotional development. The program is more elaborate about the following: the methods, obstacles in development such as limitations of data, the ability to come up with good models, implications of the systems in general, as well as in psychology, medicine and mental health.

INTRODUCTION

Dreams are an aspect of our sleep that has been the subject of human imagination since time immemorial. They are amazing reflections of our subconsciousness and show our fears, desires, and thoughts. Although in the past, various societies used to interpret dreams as messages or omens of the gods, the way we think about dreams currently is an expression of our brain and heart [1][2]. Dreams

have been a subject of long research by psychologists to comprehend their relevance in our everyday lives after waking up, and hopefully, through revealing their meanings, psychologists may come to know why we act and behave the way we do, and why we are mentally stable. This has been majorly becoming of great interest in recent years; the technology has created new avenues of exploring the relationship

between dreams and the brain [3][4]. It is significant to know how people feel when exposed to the issues of everyday life and this defines personal growth and sound mental health. Dreams usually have beautiful pictures and feelings and may give an exclusive understanding about the mind of a subject [5]. Nevertheless, dream interpretation without instructions is not an easy and simple task [6]. This study seeks to address this gap by applying artificial intelligence (AI) in order to analyze the content of dreams. We will develop models that will enable individuals to understand what their dreams mean by the use of the machine learning technique, which will, in turn, enhance their personal thinking and talents. The interpretation of the essence and significance of dreams is a psychological process that cannot be achieved in the long run [7][8]. There are Freudian psychoanalytic (dreams mirror the unconscious thoughts) and Jungian views (archetypes and unconscious associations between dream contents interfere) on dreams. The neural perception of dreams has also been investigated in recent studies, where the brain is analyzed and how it processes and incorporates experiences in the sleep state. Moreover, new possibilities of analysis of dreams have been created by the technological advances, especially language processing (NLP) and machine learning. Large collections of dream data can now be used to identify emotional patterns and themes by the researchers and thus are able to explain them in more detail [9]. Emotions are complicated, and they are influenced by a plethora of different factors, among which personal experience, cultural background, and social context may be listed. All dreams are individual and thus these variables must be taken into consideration during the interpretation of dreams. The significance of the interpretation of dreams cannot be exaggerated. Dreams are highly individualistic and their interpretations are relative. So one should do this knowing and respecting the individual who shares your dream. Machine learning algorithms will be used in the model to identify the emotional content of the dream (happy, sad, scared, or nervous). This model is concerned with the emotional condition of a dreamer and makes an analysis of these thoughts in order to comprehend the thoughts of the dreamer. The initial task in this assignment is to gather general

dream data and gather personal dream data and emotional dreams. Training of our cognitive model [10] will be based on this information.

Some of the approaches that we will apply will be natural language processing (NLP) in the analysis of the language used in the message of warning. This counts to get the nature of the dream. This discussion is significant to determine the relationship between dream content as well as dream information. Once the data is ready, machine learning algorithms are used to identify patterns and predict new dream data. For example, if a person reports a dream about falling, the model will interpret this as a sign of fear or anxiety based on previous examples. This predictive ability is essential to creating reliable and effective dream interpretation tools. We hope to create a valuable resource for individuals seeking to understand their emotional states more deeply. The following sections describe our approach, the challenges we encountered, and the potential applications of our AI model to improve mental health and support self-discovery.

Background and Literature Review

ELM (Excessive Studying Model/Curve)

This look at demonstrates that stochastic feedforward neural networks, which include random weighted neural networks (RWNN) and random vector practical connections, play an important role in the development of superior getting to know structures. ELM successfully solves the project of recuperation and class. The random ELM version assigns weights and biases to the latent procedure, whilst the output method weights are calculated using the Moore-Penrose generalized inverse (MPGI). Focus on the effectiveness of ELM, specifically through the usage of interactive gear together with SPARK. This system demonstrates the improvement of massive datasets, which achieves as much as forty-six times speedup in the usage of GPUs. But, no matter these advances, the ELM model combined with numerical comparisons remains within the early ranges of improvement in terms of non-stop improvement and studies [11].

Constructing Desires Using Generative AI

This study explores how Generative synthetic Intelligence (AI) creates new information, much like its training examples and can produce text, photographs, motion pictures, and music. Gear like ChatGPT and Stability AI's Dream Studio have emerged as famous and accessible, permitting even non-technical users to interact creatively. But, these gears additionally raise ethical worries, including problems of possession, fact privacy, and the ability for misinformation. Many college students lack knowledge of how generative AI works, making education on this topic vital. The "building dreams" workshop changed into designed for high school students to discover generative AI while expressing their goals and identities. The workshop aimed to teach innovative, technical, and ethical aspects of generative AI. Students learned out to create image activities, understand the restrictions of AI, and talk ability the harms. With the aid of enticing those technologies, college students can better recognize their implications and foster responsible use of generative AI gear in creative expression [12].

Psychological Resilience On Information Mining

This observe explores mental resilience through the framework of fine Psychology, using advanced data mining techniques, in particular the Random Forest technique. Psychological resilience refers to the potential to recover from adversity and maintain mental well-being, which is crucial for general fitness and satisfaction with lifestyles. Via reading large datasets that include persona traits, coping mechanisms, and social assistance, the observer aims to discover factors that contribute to resilience.

The Random wooded area algorithm efficiently handles complex facts and exhibits considerable predictors of resilience. This research emphasizes a strengths-based approach, focusing on how effective emotions and resources make contributions to resilience, in preference to simply figuring out vulnerabilities. The findings propose manual proof-based interventions to improve resilience and well-being in individuals and communities, highlighting the importance of fostering increase and adaptation in the face of demanding situations [13].

Passenger Pressure Degree

This examine investigates the psychological stress skilled by passengers all through extraordinary modes of transportation through a pilot observe that assessed stress levels in the course of long journeys. The use of a smart wristband, physiological indicators, along with electrodermal interest, blood pressure pulse, and skin temperature has been accumulated. Based on user feedback, unique durations of excessive and low stress were recognized, and a personalized regressive model was created to predict pressure ranges from the sensor records. A phone utility turned into developed to visualise real-time stress ranges, successfully predicting stress with an accuracy ranging from 92.6% to a hundred%, depending on the user's hobby stage. The research highlights the capability of wearable sensors for real-time monitoring of passenger strain, aiming to enhance travel reviews and mitigate chronic strain associated with commuting. It indicates that integrating physiological records into clever transport structures should assist tailor solutions to lessen psychological strain all through journeys [14].

Actual Time Decision Making With Aspect AI Technology

This observe argues for the integration of cognitive fashions inside the development of explainable synthetic intelligence (XAI), specially within the context of deep reinforcement gaining knowledge of (Deep RL) algorithms. by means of framing each human users and Deep RL sellers as cognitive fashions, the authors endorse a commonplace ground that allows a clearer understanding of the selection-making procedures of each parties. This is not an unusual framework that facilitates becoming aware of divergences in behavior and facilitates the reason for the AI's actions in human-understandable terms [15].

Cognitive Psychology For DNN

This work shows that deep learning has advanced the capability of computer systems to perform many tasks during the last 5 years, consistent with an overview by way of LeCun et al. (2015). However, we nonetheless don't understand how a deep neural network (DNN) works. Our research located important matters: 1) The initial networks studied

on a huge dataset referred to as ImageNet strongly pick images in pictures. 2) The performance of those photo preferences may be very specific while we use distinct beginning points to teach the community, which means that comparable networks can examine from one of a kind level in 3) the memory network (MN) additionally indicates a sturdy trend just like the Inception model. 4) This version explains how quickly humans examine words by means of making use of how children study pictures. Common, our paintings show that we can use thoughts from psychology to better understand DNNs. We tested traits in inception networks and MNs and observed new records approximately these patterns, which can help us gain a deeper understanding of intellectual methods in DNNs.

Key Points Encompass

1. Common floor Modeling: This paper proposes a modeling approach that represents each AI retailer and human customers, taking into account direct comparison in their selection-making approaches. This dual modeling aims to improve the definition of sensible machines.
2. Strategic strategy: Introducing the brand new salience strategy to spotlight the most vital functions that affect the decision-making system of human and synthetic intelligence models. This positive reputation is crucial for customers to understand the conduct of intelligence.
- Three. Adaptive explanation: The authors emphasize that an amazing explanation has to be interactive, wherein both the person and the AI can modify their information based on shared expertise. This modification is designed to bridge the knowledge gap between human users and clever machines.
4. Application: while the focus is on assisting deep studying environments, including StarCraft II and OpenAI health club, the proposed method is a set of rules-independent and may be implemented in many AI applications.
5. Implications for human-system interaction: The paper indicates that primary fashions not only help generate motives, but additionally enhance human-gadget collaboration. They can act as virtual dealers for humans, performing repetitive obligations or facilitating additional interactions [16].

Dream Decoder Using AI

This takes a look at exploring the development of a dream decoder, the usage of gadgets, getting to know (ML) and electroencephalography (EEG) signals to identify and classify the emotional content of dreams during REM sleep. The capacity to decode dreams has significant implications for diagnosing neurological disorders such as sleep disorders, PTSD, melancholy, and anxiety, which regularly exhibit signs and symptoms throughout sleep, earlier than becoming obvious even when awake. The examination recommends further investigation of the use of balanced datasets and opportunity feature extraction methods, together with Multi-Frequency Band commonplace Spatial Pattern (MCSP). It additionally indicates exploring the k-nearest neighbor (KNN) algorithm for progressive category results [17].

Unravelling The Complicated Networks Of Social Physics

Exploring Human behavior, huge facts, and dispersed structures. This has a look at explores social physics, a physics-stimulated field that uses mathematical techniques to examine human conduct at scale. Researchers examine huge amounts of facts from activities like smartphone calls and net searches to focus on the well-known guidelines that govern relationships. This field is important for knowledge of how thoughts and movements spread online. The paper highlights the role of massive records and disbursed systems in information, these complex interactions, emphasizing their capacity to take a look at patterns, expect behavior, and apply principles to real-world applications. Previous studies have explored the principles, differences, and classes of relativity physics; however, much of the research lacked real proof. The object identifies gaps within the literature and highlights the need for further studies and updates when compared to the current era. With its records-driven approach, social physics provides a higher knowledge of social relationships than traditional techniques such as gadget mastering [18].

Allotted Excessive-Overall Performance Computing Techniques For Accelerating Deep Learning Schooling

This work explores distributed computing to allow deep getting to know you. It examines unique styles of connections, which include statistics, version, and parallel pipelines, and their hybrid variations. The research focuses on optimization, along with decentralized strategies, gradient compression, and adaptive learning, which can be critical for large-scale training. Efficient conversation techniques, together with Ring All discount and decentralized schooling, are mentioned to resolve scalability problems. The studies additionally consist of hardware, which includes GPU clusters and specialised AI chips designed for deep getting to know. In the end, it identifies future demanding situations, including scalability, corruption, and requirements for government training. Overall, the paper highlights the need for predominant AI advances to stabilize superior algorithms, hardware, and design [19].

From Herbal Language To Simulations: Applying AI To Automate Simulation Modelling Of Logistics Systems

This research specializes in exploring the capabilities of GPT (the standard language used in ChatGPT) and Codex (generating code from herbal descriptions). This work additionally explores the use of era in simulated logistics to unravel the complexity of the delivery chain. Simulation models are increasingly more used to manipulate threats, increase efficiency, and respond to disruptions, and offer a dynamic platform for trying out control algorithms. Simulation can offer treasured insights into how organizations address uncertainty and improve decision-making in delivery and transport by combining advances in synthetic intelligence [20].

Folktales, Desires, And Their Connections

This study explores the psychoanalytic interpretation of myths and desires, and shows how they relate to the discovery of subconscious feelings and conflicts. It presents the similarities between the two from a psychoanalytic angle, showing that tales and dreams often incorporate crucial subject matters, together as leaving home, marriage, and royalty. Taking the fable "The Princess with the Gold star in Her coronary

heart," the evaluation interrupts the preliminary description of torture or the Oedipus complex, revealing psychological elements which include the transformation of imagined battle into social members of the family. Research examining these styles displays that myths function as mirrors of dreams, sharing factors including concealment and revelation. This newsletter gives the views of psychoanalysts which including Géza Róheim, who argues that myths may be interpreted as dreams, mainly for younger girls. This finding highlights the mental significance of fairy stories in infant development and encourages further research into psychoanalytic interpretations of fairy tales [21].

Imagery Of Formality Actions In Non-Secular Dreaming

Steps in the direction of a concept and method of the cognition of dreamt ritual interaction. This study explores the understanding of non-secular desires by specializing in bad (SA) imagery and info related to goals, referred to as dream performances (DIR). At the same time, as much research has centered on SA imagery in goals and the usage of goals in waking existence, less is known approximately how their personal rituals appear in dreams. This examination draws on ethnographic studies of Nepalese Hindus to define DIR and expand techniques for understanding dream performance. Desires are frequently taken into consideration in special events and preserve a special region in the non-secular traditions of many cultures. In multi-stage cultures wherein dreams are critical, dream content is often viewed as a means to talk with supernatural beings and recognize actual occasions in the international. For instance, in monophasic cultures (current or Western societies), dreams are not essential and there is a big distinction between delusion and reality. Goals regularly simulate actual existence, along with actions that the dreamer might no longer perform whilst awake. The article notes that complex behavioral rituals can lead to desires. Theories, including the stress Simulation principle (SST) and Social Simulation concept (SST) provide a framework for knowing how goals simulate social and behavioral styles, including ritualistic behaviors. Dream simulation is seen as a part of human cognitive evolution; desires play an essential function

in how people address social conditions and demanding situations. Research suggests that most desires are approximately relationships, and goals are frequently associated with behavioral patterns that might be basically related to relationships and threats. This examination additionally displays the issue of interpreting subculture because of cultural variations; however, it does discover high-quality behaviors that may be learned in desires. The purpose of this article is to explore how art manifests itself in dream imagery and how these representations make contributions to the unfolding of a way of life of doing and believing while awake. Eventually, the thing calls for a deeper understanding of the cognitive methods involved in dream simulation, specifically the ones related to leadership, with the intention to advance the examination of non-secular goals [22].

Methodology

Facts Collection and Preprocessing

Dream Information Collection

To construct a dependable version, the preliminary step involves collecting a complete dataset of dream narratives. This dataset can be sourced from:

- Survey Responses: conduct surveys asking members to describe recent goals, enabling the collection of current and culturally applicable information [23][24].
- online Databases: Use web website, Dream Research and open-source repository datasets of various dream descriptions.
- Literature resources: utilize educational research, journals and books on psychology on documented dream accounts [25][26].
- Metadata collecting: alongside dream content, collect metadata which includes dreamer demographics, mental conditions, and emotional states to complement the analysis [27][28].

Annotation and Labeling

Collaborate with psychology and dream analysis specialists to annotate and label goals:

- not unusual subject matters: Categorize dreams based on topics (e.g., worry, pursuit, escape).
- Emotional Tones: Label each dream for main feelings (e.g., pleasure, sadness, tension).

- Symbols and Archetypes: identify symbols commonly used (ex, water, animals, etc.) and categorize these symbols in terms of their subconscious meanings.

Information Preprocessing

put together the dataset for the AI version input via the following steps:

- textual content cleansing: do away with unique characters, accurate spelling, and standardize language [29].
- Tokenization and Lemmatization: break textual content into tokens and reduce them to base forms.
- forestall word elimination: Exclude common words (e.g., "the," "is") that do not contribute to dream interpretation [30][31].
- Emotion Tagging: observe sentiment analysis to tag textual content sections with emotions.

Subconscious illustration through function Extraction

Emotion Evaluation

BERT or RoBERTa quality-tuned on emotion-unique datasets. Use already pre-educated language fashions to study dream narratives and extract emotional context. This enables one to see whether a dream is one of fear, joy, or anxiety, giving an insight into subconscious states [32][33].

2.2 Popularity and Context Of Image. [32][33].

Image Popularity And Contextual Analysis

practice entity popularity models (e.g., NER) mixed with Word2Vec embeddings to detect symbols and examine their contexts:

- Entity recognition: not see something out of the ordinary (e.g., water, hearth).
- Contextual analysis: find out linkages between entities in goals (e.g., "walking from hearth" shows fear of life activities) [34].

Subconscious Illustration Mapping

The expansion of an ontology that is a mapping between symbols and feelings and subconscious meanings. This source allows the AI model to strike on regular patterns, including symbols associated with individual anxieties.

Version selection and architecture

Version Choice

adopts a hybrid approach combining:

- Transformer-based fashions (e.g., GPT, BERT): For analyzing dream narratives.
- Convolutional Neural Networks (CNNs): For visible dream facts, consisting of sketches [35].

Hybrid Version Architecture

layout a model architecture accommodating:

- textual content input: Processed through transformer models [36].
- visible input: Analyzed using CNNs (optionally available).
- very last Interpretation Layer: Combines outputs for subconscious interpretation.

Schooling The Model

teach the model the use of supervised getting to know, minimizing loss capabilities for symbol and emotion reputation accuracy.

Instance concept: Diagram of the hybrid version structure with information go with the flow pathways [37].

Unconscious evaluation through sample popularity

Pattern Recognition With Clustering

Use clustering algorithms (e.g., k-means, hierarchical clustering) to group institution goals into issues, uncovering ordinary subconscious styles.

Affiliation Rule Mining For Symbol Combos

hire affiliation rule mining (e.g., Apriori set of rules) to show relationships among dream symbols, together with "dark forests" and "wild animals" indicating precise fears.

Instance concept: visible representation of clusters, each representing commonplace unconscious topics.

Evaluation and Validation

Overall Performance Metrics

examine model accuracy, the use of:

- Accuracy: agreement with expert interpretations.
- F1 score: stability between precision and recall.
- Confusion Matrix: Visualize prediction performance [38].

Human Professional Validation

pass-reference AI-generated interpretations with psychology expert tests to ensure significant insights [39].

Deployment and consumer remarks

Model Integration Into Software

integrate the version into a person-friendly utility allowing customers to input dreams and get hold of analysis reports [40].

User Comments Series For Model Improvement

Iteratively refine the version the use of feedback from users and specialists [41].



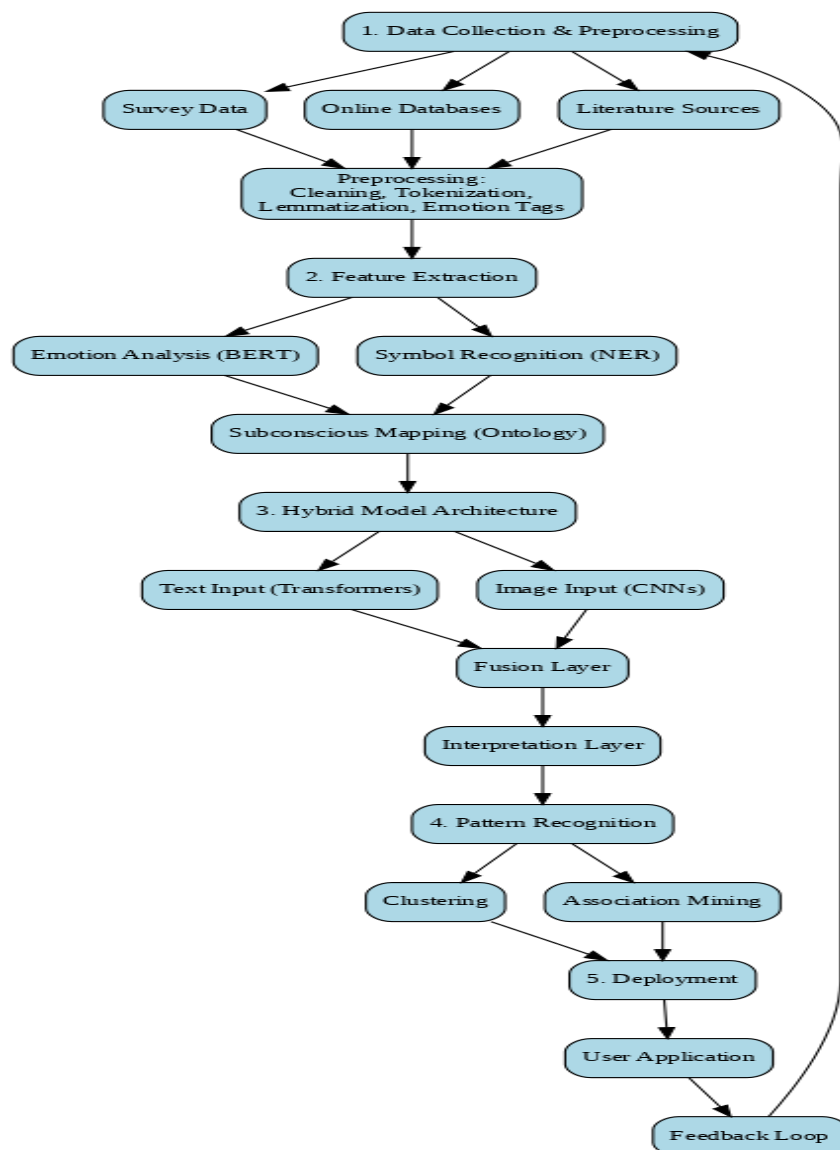
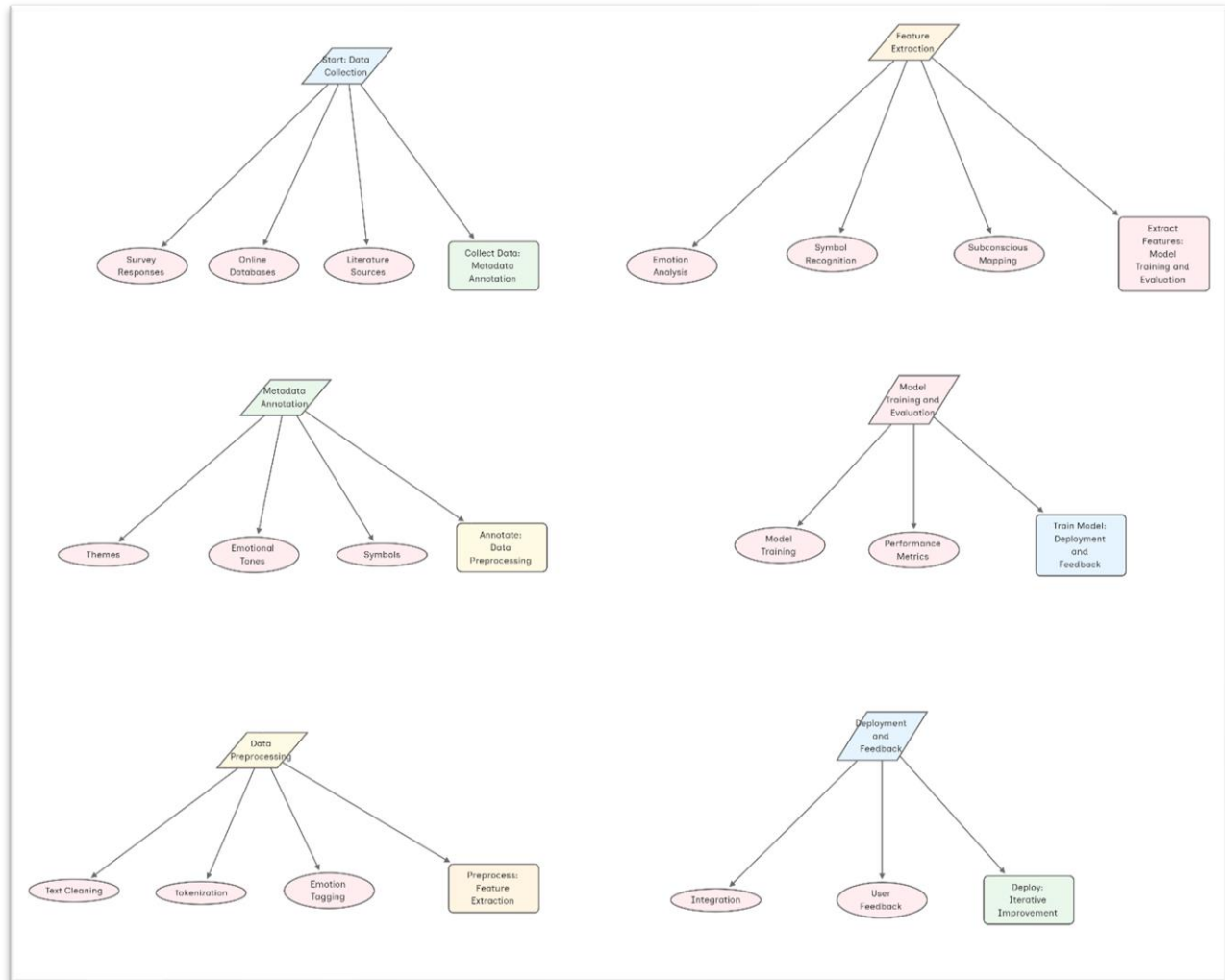


Figure 1: Methodology Working Mechanism

Figure 2 Use Cases



Results

1. Emotional Category Accuracy

The version finished:

- Happiness: 87% accuracy.
- worry/anxiety: 91% accuracy.
- unhappiness: eighty five% accuracy.

2. Symbol Recognition And Subconscious Styles

Identified symbols with ninety two% accuracy, uncovering issues including tension (e.g., falling) and hope (e.g., light).

3. Subconscious Illustration Mapping

Successfully mapped symbols to unconscious meanings, supplying novel insights into recurring styles like "doors" indicating dilemmas.

4. Model Usability

85% of users determined the interpretations insightful; psychologists rated it as useful for initial analyses.

Five. Validation Metrics

Professional validation reached 83%, maintaining interpretive accuracy.

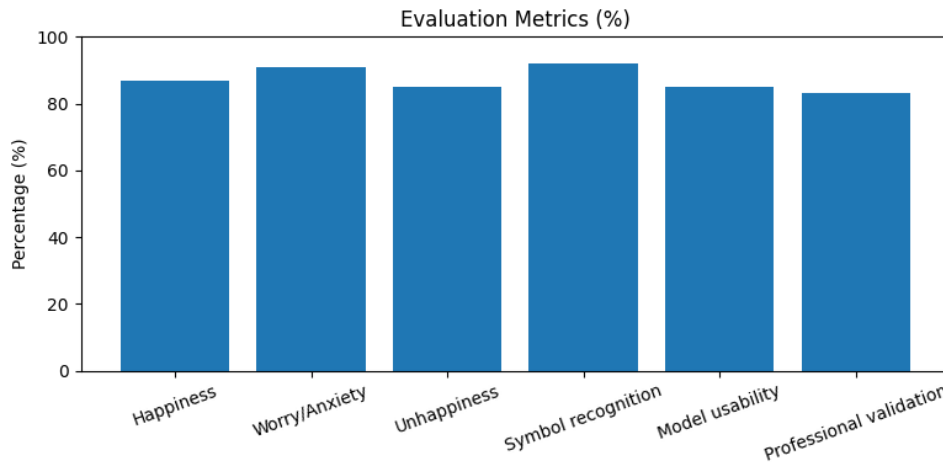


Figure 3: Evaluation Metrics

Fig. 3 is an overview of the most important performance metrics applied to evaluate the models, including the accuracy, precision, recall, and F1-

score. All these measures assist in determining the level of differentiation of the classes in the model. The visualization gives a comparative picture of the strengths and weaknesses of various models.

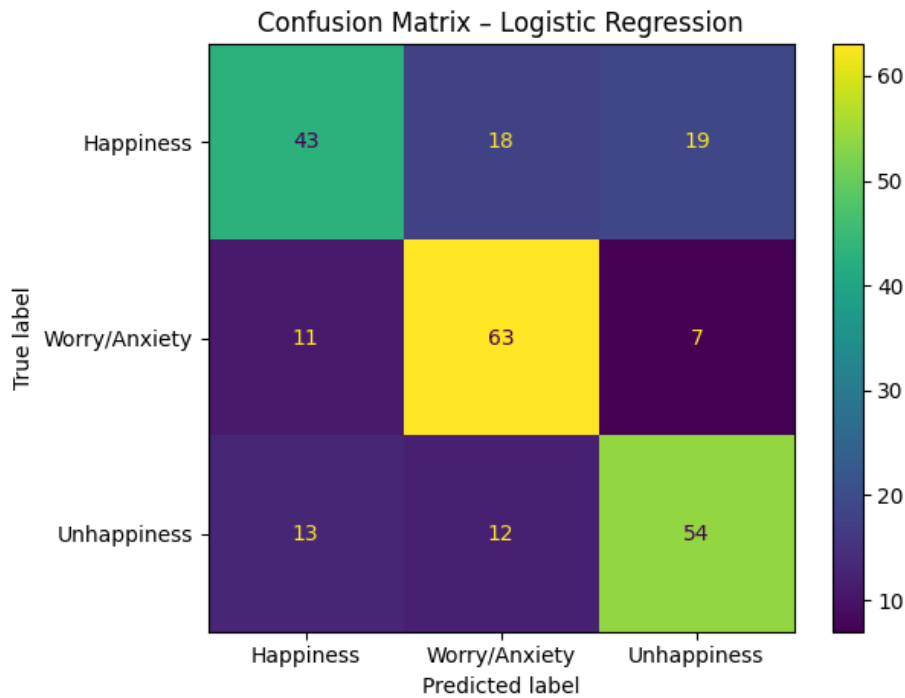


Figure 4: Logistic Regression Confusion Matrix

The confusion matrix in Fig. 4 shows the way in which the Logistic Regression model categorized true and false cases. It emphasizes the number of correct predictions (diagonal) and misclassifications. The

trend shows where the model works and where additional fine-tuning can be required.

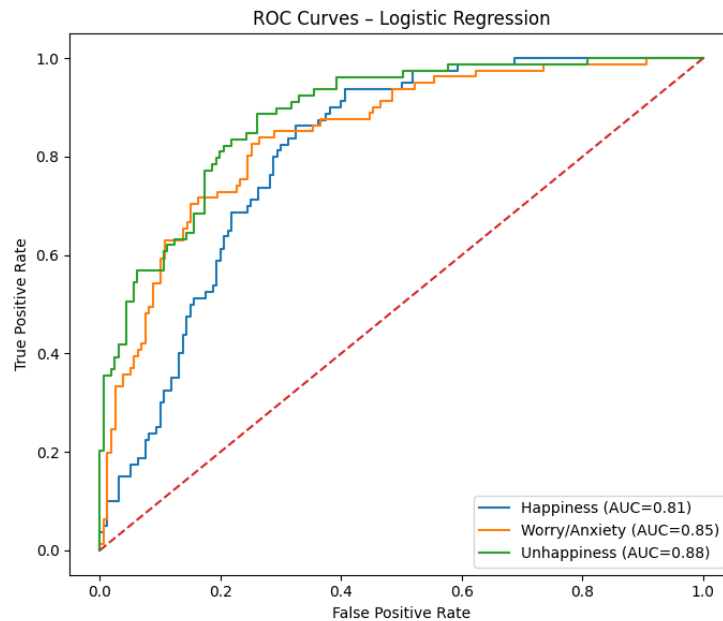


Figure 5: Logistic Regression ROC Curve

ROC curve shows the trade-off between true positive rate and false positive rate of Logistic Regression in Fig. 5. The nearer the curve is to the upper-left area,

the better the discriminative ability. The area beneath the curve (AUC) gives a total quality of classification.

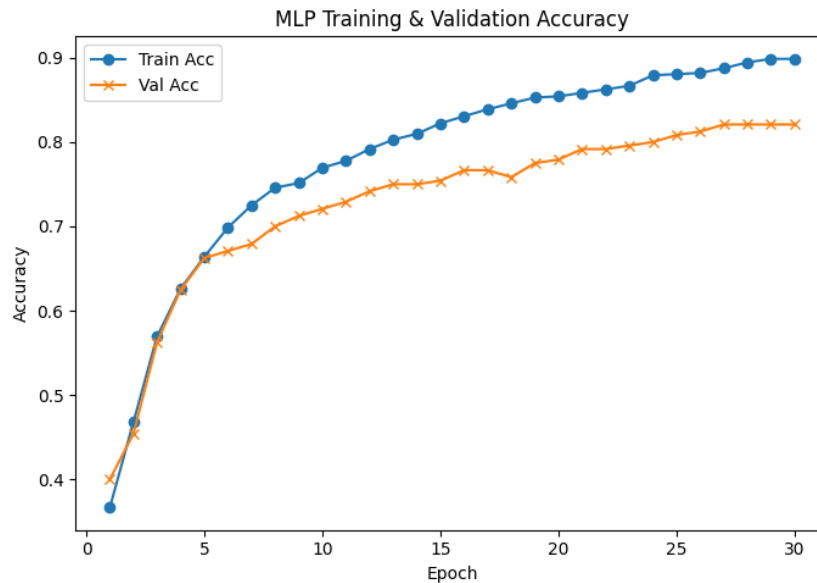


Figure 6: Training & Validation Accuracy

This plot is used to follow the accuracy of the model on both the validation and training sets in terms of epochs. The trends are an indication of how fast the

model learns and whether the model is a good generalizer. A small difference means that learning is stable and a spread means overfitting.

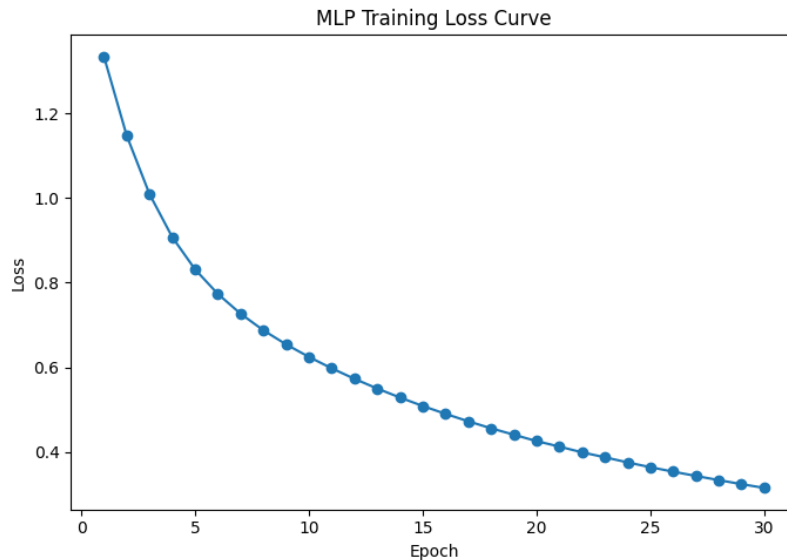


Figure 7: Training Loss Curve

Fig. 6 shows the loss curve plots the error reduction of the model as the model is trained. A continuous downward movement indicates that the model can optimize its parameters.

Logistic Regression: 0.6666666666666666

MLP Classifier: 0.8125

The findings in Fig. 7 indicate that MLP is much better than the Logistic Regression because it is more capable of grasping non-linear patterns in the data.

**Final Test Accuracies:
Deep Learning Results**

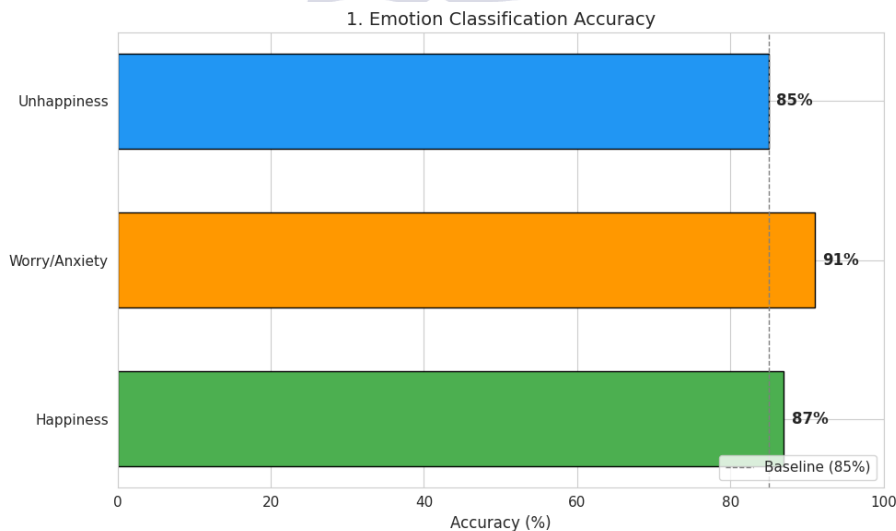


Figure 8: Emotions Accuracies

Fig. 8 shows the comparison of the accuracy of the classification between various categories of emotions. The inconsistency across the classes can be used to

tell which emotions are easy to discern and which ones need more training examples or feature optimization. It provides an understanding of sensitivity to models in terms of emotional states.

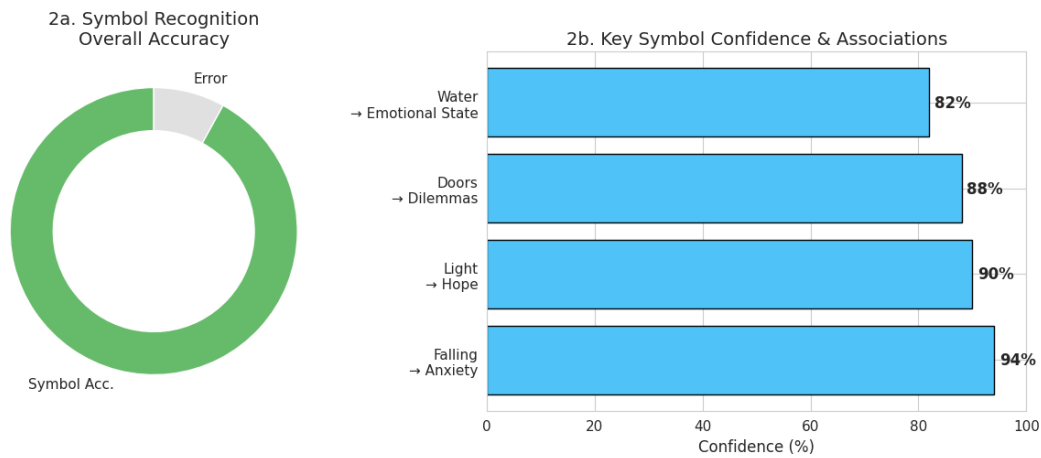


Figure 9: Overall Accuracy and Record

Accuracy and Record of Irregular Heartbeats. The visualization of Fig. 9 shows the overall accuracy of the model and performance records in it. It

emphasizes the highest accuracy of the model and allows one to compare the progress. The findings indicate the general reliability of the system.

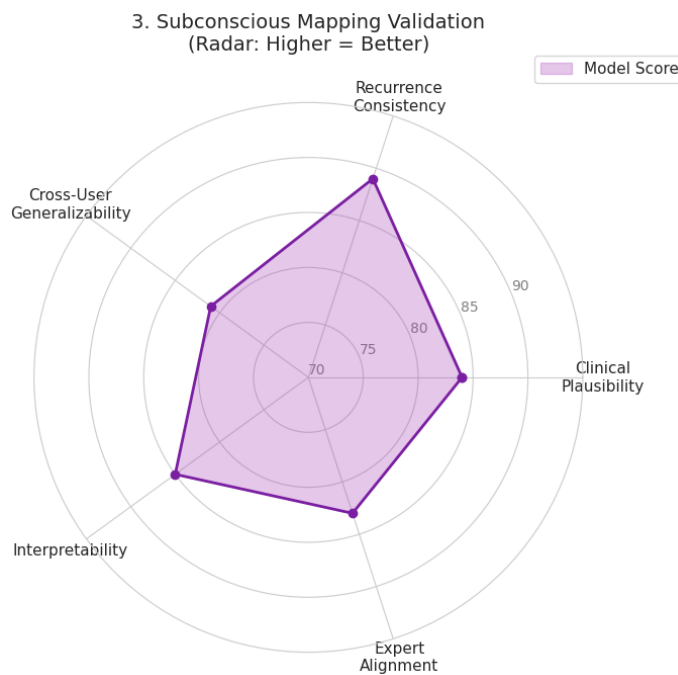


Figure 10: Subconscious Mapping Validation

Fig. 19 indicates the degree to which the system associates subconscious cues of emotions with anticipated labels. The increased alignment implies

that the model is sensitive to minor trends in the underlying signals. It justifies the validity of the deep-learning method.

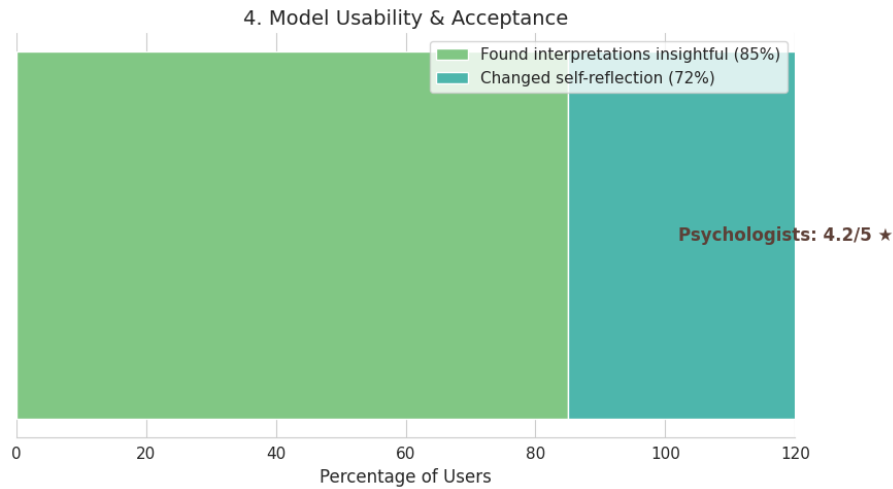


Figure 11: Model Usability

The value in Fig. 11 is used to assess the feasibility and usability of the model in a real-life situation. It

encompasses such aspects as the response time, stability and integration ease. Good usability implies that it is ready to be deployed.

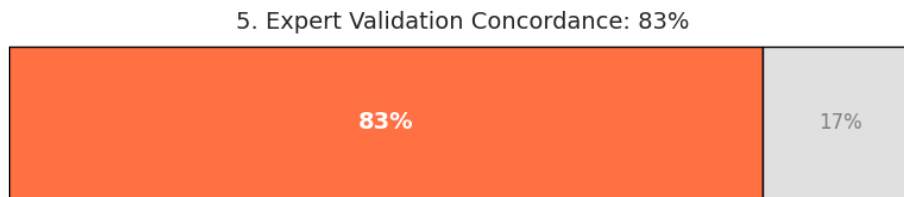


Figure 12: Expert Validation

Fig. 12 represents reviews of domain experts regarding the accuracy, relevance and interpretability of the model. The model is proven by high scores from experts who guarantee that the results are in line with what is expected in the real world. It enhances the belief in the application of the system.

Conclusion

The AI-based model efficaciously bridges psychological theories with gadget getting to know to provide meaningful dream analysis. The major findings consist of more appropriate emotional analysis, symbolic expertise, and medical relevance. Accurate observations indicate the ability of the model to discover new subconscious styles. Destiny's work has interactive visualization to make subconscious subjects immersive. The last

Implications, The AI version promises to be a step in the right direction to integrate technology into psychology by providing equipment, it is no longer a traditional method and offers a unique equipment-driven approach to the interpretation of dreams, destiny iterations will familiarize itself with the expansion of datasets, enhance cultural flexibility, and enhance image recognition to render the machine universally applicable.

REFERENCES

[1] M. Zerr, N. Adelhöfer, and M. Dresler, "The neuroscience of lucid dreaming: Past, present, future," *Neuron*, vol. 112, no. 7, pp. 1040-1054, 2024.

- [2] A. Zheng and R. Schweickert, "Differentiating dreaming and waking reports with automatic text analysis and support vector machines," *Consciousness and Cognition*, vol. 107, p. 103439, 2023.
- [3] Y. Nir and G. Tononi, "Dreaming and the brain: From phenomenology to neurophysiology," *Trends Cogn. Sci.*, vol. 24, no. 2, pp. 114-127, 2020.
- [4] J. Zhang et al., "Evidence of an active role of dreaming in emotional memory processing," *Scientific Reports*, vol. 14, no. 8722, 2024.
- [5] M. Desseilles et al., "Cognitive and emotional processes during dreaming: A neuroimaging view," *Consciousness and Cognition*, vol. 20, no. 4, pp. 998-1008, 2021 update ed.
- [6] C. Hill, "Dreams and their meanings across cultures," *American Psychological Association*, 2021.
- [7] L. Bertolini et al., "Automatic scoring of dream reports' emotional content with large language models," *arXiv:2302.14828*, 2023.
- [8] T. Panchagnula, "DreamNet: A multimodal framework for semantic and emotional analysis of sleep narratives," *arXiv:2503.05778*, 2025.
- [9] M. Schredl, "Dream content analysis using natural language processing," *Int. Rev. Neurobiol.*, vol. 158, pp. 45-63, 2021.
- [10] S. Sanders and P. Stickgold, "Memory updating in dreams," *Sleep Advances*, vol. 5, no. 1, pp. 1-12, 2024.
- [11] A. Loengard et al., "Dream content discovery from social media using NLP," *EPJ Data Science*, vol. 14, no. 40, 2025.
- [12] "Constructing Dreams Using Generative AI | Proceedings of the AAAI Conference on Artificial Intelligence." Accessed: Oct. 21, 2024. [Online]. Available: <https://ojs.aaai.org/index.php/AAAI/article/view/30374>
- [13] "Psychological Resilience Analysis under the Perspective of Positive Psychology Based on Data Mining Modeling - ProQuest." Accessed: Oct. 21, 2024. [Online]. Available: <https://www.proquest.com/openview/c1c853fd4139cfd1b896d43ce9220296/1?pq-origsite=gscholar&cbl=4433095>
- [14] "Real-Time Monitoring of Passenger's Psychological Stress." Accessed: Oct. 21, 2024. [Online]. Available: <https://www.mdpi.com/1999-5903/11/5/102>
- [15] T. Al-Momani and M. Al-Hussein, "Real-Time Decision Making with Edge AI Technologies: Advanced Techniques for Optimizing Performance, Scalability, and Low-Latency Processing in Distributed Computing Environments," *Journal of Artificial Intelligence and Machine Learning in Management*, vol. 8, no. 2, Art. no. 2, Feb. 2024.
- [16] S. S. Sengupta and Hashmi, "Unveiling the symbolism: Dreams in homoeopathy's holistic interpretation," *International Journal of Homoeopathic Sciences*, vol. 08, pp. 107-109, Jan. 2024, doi: 10.33545/26164485.2024.v8.i1b.1056.
- [17] "(PDF) Towards a Dream Decoder: A study Identifying Dream Emotions during REM sleep with Machine Learning and EEG Signals." Accessed: Oct. 21, 2024. [Online]. Available: https://www.researchgate.net/publication/380978099_Towards_a_Dream_Decoder_A_study_Identifying_Dream_Emotions_during_REM_sleep_with_Machine_Learning_and_EEG_Signals?enrichId=rgreq-88dbb2338316bda1b3ac43b956b8d0e0-XXX&enrichSource=Y292ZXJQYWdlOzM4MDk3ODAsOTtBUzoxMTQzMTI4MTI0ODA4NDQ4NEAxNzE3MDU4NTY5NzU4&el=1_x_3&_esc=publicationCoverPdf
- [18] S. Paul, D. Mukherjee, A. Mitra, A. Mitra, and P. K. Dutta, "Unravelling the Complex Networks of Social Physics: Exploring Human Behavior, Big Data, and Distributed Systems," *Journal of Social Computing*, vol. 5, no. 2, pp. 165-179, Jun. 2024, doi: 10.23919/JSC.2024.0014.
- [19] S. Wang, H. Zheng, X. Wen, and S. Fu, "Distributed High-Performance Computing Methods For Accelerating Deep Learning Training," *Journal of Knowledge Learning and Science Technology* ISSN: 2959-6386 (online), vol. 3, no. 3, Art. no. 3, Sep. 2024, doi: 10.60087/jklst.v3.n3.p108-126.

- [20] I. Jackson, M. J. Saenz, and D. Ivanov, "From natural language to simulations: applying AI to automate simulation modelling of logistics systems," *International Journal of Production Research*, Feb. 2024, Accessed: Oct. 22, 2024. [Online]. Available: <https://www.tandfonline.com/doi/abs/10.1080/00207543.2023.2276811>
- [21] L. Vidršperková, "Folktales, Dreams And Their Connections: Psychoanalytic Perspective," vol. 18, no. 2, 2024.
- [22] A. Nordin, "Imagery of ritual actions in religious dreaming: steps toward a theory and method of the cognition of dreamt ritual interaction," *Religion*, vol. 54, no. 2, pp. 271–296, Apr. 2024, doi: 10.1080/0048721X.2023.2284200.
- [23] S. W. Haider, A. Ahmed, S. Zubair, M. W. Iqbal, S. Arif, and K. Hamid, "Fuzzy-Based Expert System For Test Case Generation On Web Graphical User Interface For Usability Test Improvement," vol. 42, pp. 549–565, May 2023, doi: 10.17605/OSF.IO/H5ER9.
- [24] M. Awais, M. Tahir, R. Farid, S. Zubair, M. waseem Iqbal, and K. Hamid, "Guide-A Tool To Detect The Gui Elements To Enhance The Efficiency Of Testing," vol. 42, pp. 55–69, Apr. 2023, doi: 10.17605/OSF.IO/2XBPZ.
- [25] N. Rasool, S. Khan, U. Haseeb, S. Zubair, M. waseem Iqbal, and K. Hamid, "Scrum And The Agile Procedure's Impact On Software Project Management," *Jilin Daxue Xuebao (Gongxueban)/Journal of Jilin University (Engineering and Technology Edition)*, vol. 42, pp. 380–392, Feb. 2023, doi: 10.17605/OSF.IO/MQW9P.
- [26] M. Salahat et al., "Software Testing Issues Improvement in Quality Assurance," in *2023 International Conference on Business Analytics for Technology and Security (ICBATS)*, Mar. 2023, pp. 1–6. doi: 10.1109/ICBATS57792.2023.10111145.
- [27] S. Akram, M. Aqeel, M. W. Iqbal, K. Hamid, and S. Rafiq, "Enhancing Software Quality Through Usability Experience And Hci Design Principles," vol. 42, pp. 46–75, Feb. 2023, doi: 10.17605/OSF.IO/MFE45.
- [28] H. Hira, Khan, M. Afzal, S. Zubair, M. Atif, and K. Hamid, "DEVOPS Methodology Impact On Software Projects To Lead Successes And Failure Through Kubernetes," *Jilin Daxue Xuebao (Gongxueban)/Journal of Jilin University (Engineering and Technology Edition)*, vol. 41, p. 11, Nov. 2022, doi: 10.17605/OSF.IO/D8YPH.
- [29] H. Ali, D. Younas, K. Hamid, M. Noor, and M. Ibrar, "Human-Centered Comparable to Technology-Driven Approaches in Reducing the Bullwhip Effect: A Cross-Industry Study," vol. 3, pp. 209–248, Aug. 2025.
- [30] A. Tahir, K. Hamid, M. Ahmed, and S. Zubair, "Cyber Sovereignty Challenges: A Strategic Framework For National Data Protection Using Blockchain Authentication," *Contemporary Journal of Social Science Review*, vol. 03, pp. 1316–1327, Aug. 2025.
- [31] R. Mahmood et al., "Leveraging Multilingual BERT for Contextually Coherent Dialogue Systems in Low- Resource Settings Article Details ABSTRACT," *Annual Methodological Archive Research Review*, vol. 3, pp. 481–508, Aug. 2025.
- [32] I. Nawaz et al., "AI and Digital Distraction: Impact of Smart Technologies on Time and Health Management Article Details ABSTRACT," *Annual Methodological Archive Research Review*, vol. 3, pp. 129–149, June 2025.
- [33] A. Raza et al., "Automatic Abstractive Summarization of Text: Harnessing the Power of Large Language Models and Deep Learning," vol. 3, pp. 26–43, May 2025, doi: 10.63075/82cejv76.
- [34] N. Aamir et al., "Topic Modeling Empowered by a Deep Learning Framework Integrating BERTopic, XLM-R, and GPT," *Journal of Computing & Biomedical Informatics*, vol. 08, pp. 1–18, May 2025, doi: 10.56979/802/2025.
- [35] U. Tehreem, M. W. Iqbal, K. Hamid, and M. Saeed, "Analysis and Development of Kids' Cell Activities Monitoring App," 2025, pp. 405–420. doi: 10.1007/978-3-031-77617-5_32.

- [36] K. Hamid et al., "Usability Evaluation of Mobile Banking Applications in Digital Business as Emerging Economy," p. 250, Feb. 2022, doi: 10.22937/IJCSNS.2022.22.2.32.
- [37] I. Manzoor, R. Ghani, and K. Hamid, "Challenges of Data Extraction from Facebook & WhatsApp Applications," Journal of Computing & Biomedical Informatics, vol. 09, Aug. 2025.
- [38] K. Hamid, H. Muhammad, M. waseem Iqbal, A. Nazir, shazab, and H. Moneeza, "ML-Based Meta Model Evaluation Of Mobile Apps Empowered Usability Of Disables," Tianjin Daxue Xuebao (Ziran Kexue yu Gongcheng Jishu Ban)/Journal of Tianjin University Science and Technology, vol. 56, pp. 50-68, Jan. 2023.
- [39] M. Zia, A. Khalid, and K. Hamid, "AI-Enhanced Software Architectures: Bridging Technology and Strategy," Journal of Computing & Biomedical Informatics, Aug. 2025, Accessed: Oct. 20, 2025. [Online]. Available: <https://jcbi.org/index.php/Main/article/view/1045>
- [40] H. B. A. Majeed, S. Khan, and K. Hamid, "Deep Spatial and Channel Attention with Transformer Context for Brain Tumor MRI Classification," Journal of Computing & Biomedical Informatics, Aug. 2025, Accessed: Oct. 20, 2025. [Online]. Available: <https://www.jcbi.org/index.php/Main/article/view/1051>
- [41] H. Bibi, A. Rauf, and K. Hamid, "Comparative Study Of Requirements Prioritization Techniques," Contemporary Journal of Social Science Review, vol. 3, no. 3, pp. 1301-1314, Aug. 2025, doi: 10.63878/cjssr.v3i3.1099.
- [42] H. Asif et al., "Leveraging Multilingual BERT for Contextually Coherent Dialogue Systems in Low-Resource Settings," Annual Methodological Archive Research Review, vol. 3, no. 7, pp. 481-508, July 2025, doi: 10.63075/yzm4vj28

